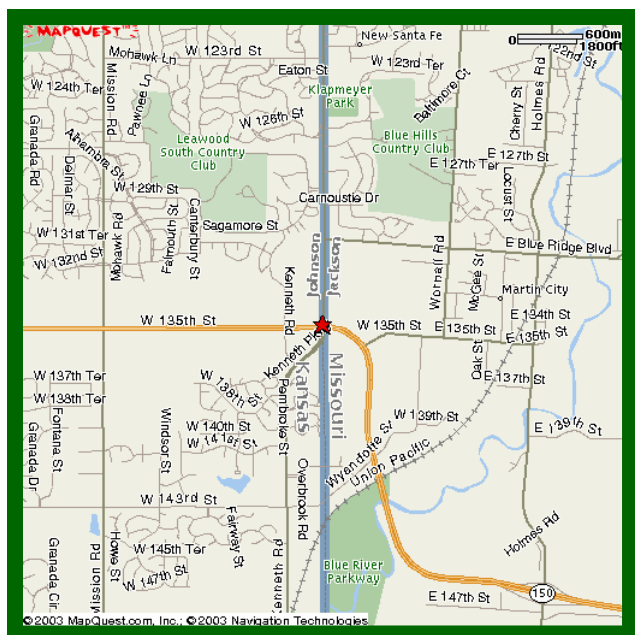


SHOPPING CENTER PAD SITES AND ANCHOR SPACE AVAILABLE

SWC 135th & Kenneth Road /
State Line Road
Leawood, Kansas

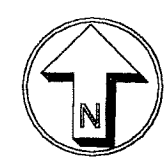
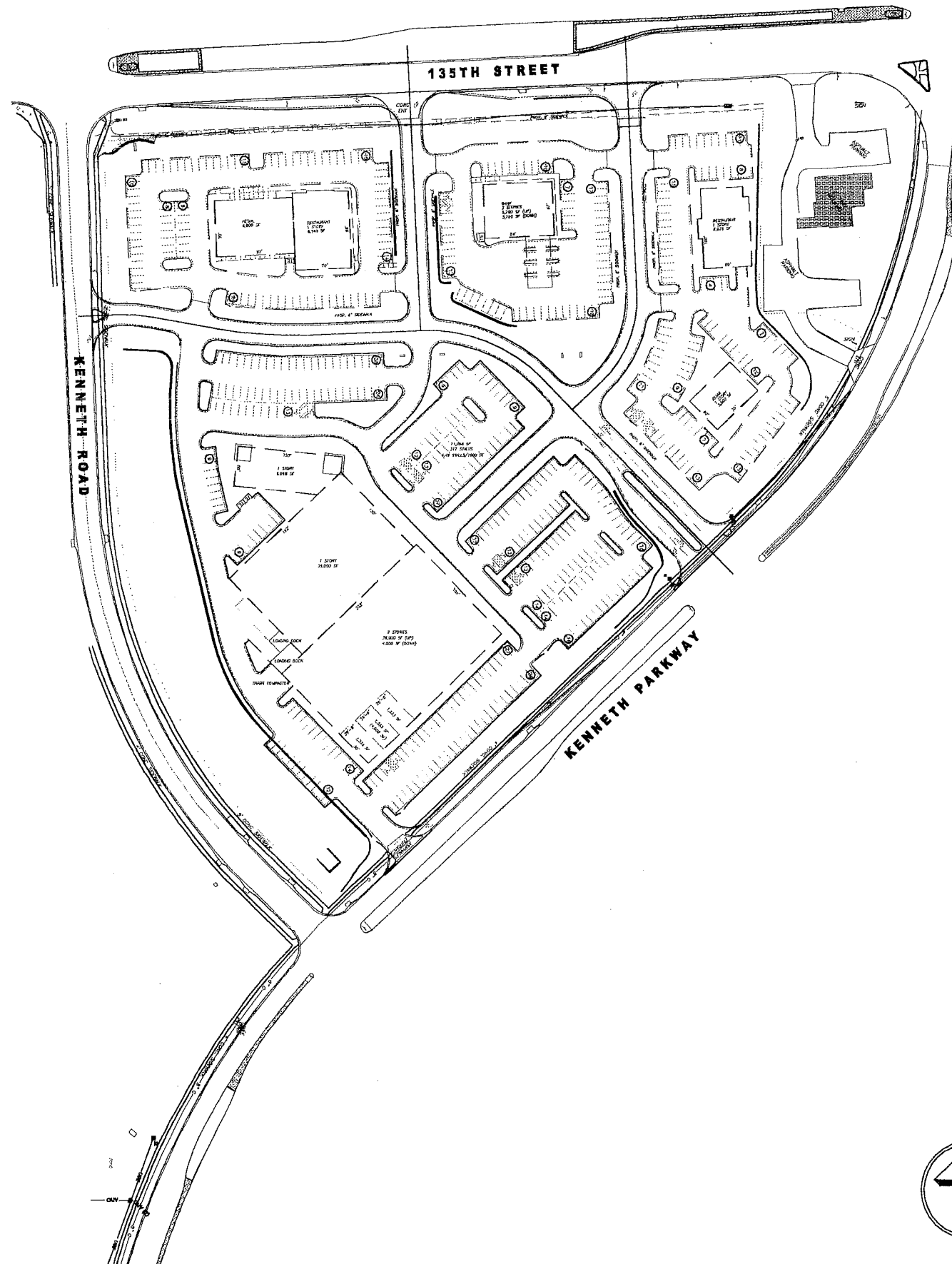


HIGH GROWTH AREA

- 3-MILE POPULATION – 40,982
- 3-MILE MEDIUM HH INCOME – \$93,244
- HIGH PROFILE / HIGH TRAFFIC COUNTS
- EXCELLENT VISIBILITY
- 3 STOP LIGHTS IN FRONT OF SITE
- ZONED CP-2



HENZLIK-OLIVER REAL ESTATE COMPANIES, LLC
13356 METCALF AVENUE
OVERLAND PARK, KANSAS 66213
TELEPHONE (913) 438-9900
FACSIMILE (913) 438-9994
WWW.HENZLIKOLIVER.COM



Site Plan
1" = 100'-0"



**ARCHITECTS
INCORPORATED**

10955 LOWELL ST., SUITE 700
OVERLAND PARK, KANSAS 66210
PH: (913) 649-8181 FX: (913) 649-1276

THIS DRAWING and/or Specifications is provided on an instrument of service by the Architect and is intended for use on this project only. This drawing remains the property of the Architect and shall be returned to him upon completion of the construction work. All drawings, specifications, designs, models and arrangements appearing herein constitute the original and unpublished work of the Architect. Any reproduction, use or disclosure of the proprietary information contained herein without the prior consent of the Architect is strictly prohibited.

© 2002 KLOVER ARCHITECTS, INC.

PROJECT TITLE:

**Leawood Market
Center**
Leawood, Kansas

DATE:

7-28-04

ISSUED FOR:

REVISIONS:

No.	Description:	Date:

PROJECT MANAGER:

KC

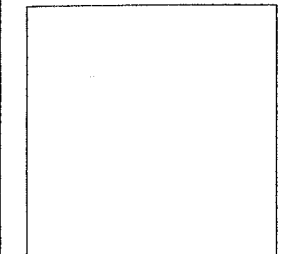
DRAWN BY:

PROJECT NO:

04068.005

DRAWING TITLE:

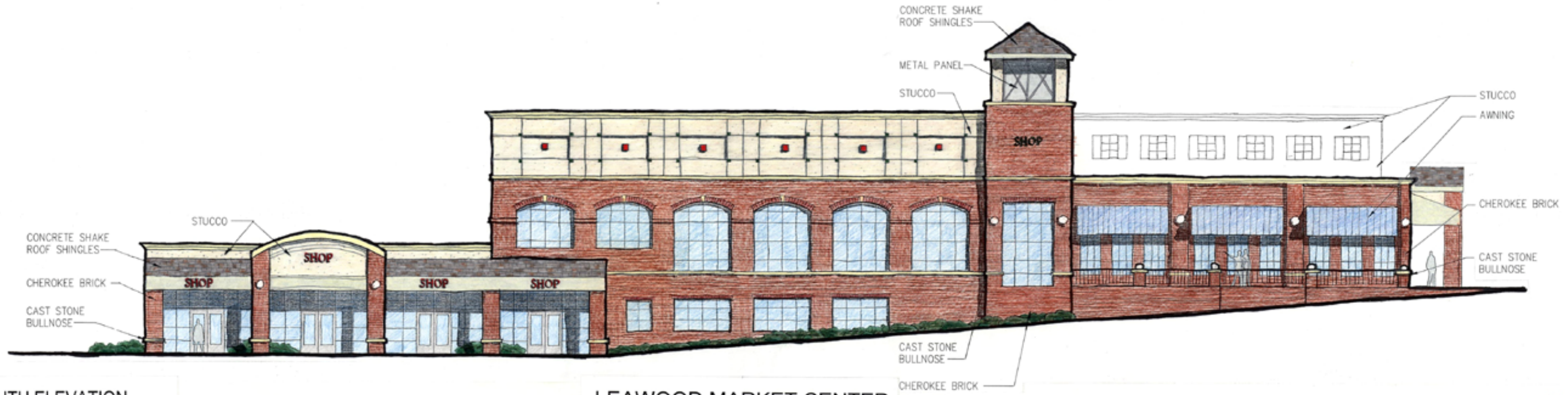
DRAWING NUMBER:





2 LOT 1 - EAST ELEVATION
SCALE: 1/8"=1'-0"

LEAWOOD MARKET CENTER



1 - SOUTH ELEVATION
SCALE: 1/8"=1'-0"

LEAWOOD MARKET CENTER

View of Retail Center from 135th St. & Kenneth Pkwy.



Developed By:
Henzlik-Oliver Real Estate Companies, LLC
10841 W. 87th St. Suite 300
Overland Park, Kansas 66214
913-438-9900

Leawood Market Center

LEAWOOD, KANSAS

 DLR Group

Aerial View of Retail Center



Developed By:
Henzlik-Oliver Real Estate Companies, LLC
10841 W. 87th St. Suite 300
Overland Park, Kansas 66214
913-438-9900

Leawood Market Center

LEAWOOD, KANSAS

 DLR Group